

➤ Notes for parents. Activity next page.

**The purpose of this task is to have your child:**

- to understand and sensibly compare the relative weights (mass) and lengths of given animals, by applying their knowledge of measurement units, and their place value understanding that a number with one more zero is ten times bigger

**Think about this:**

- Make sure that a pencil and paper are available.
- Notice that the measurements themselves are approximate, and therefore the task uses the words ‘about how many times...’
- Have your child understand that the task involves rough relative size comparisons rather than exact calculations.  
For example: ‘The killer whale is ten times heavier than the dolphin, and bit over twice its length.’
- As you and your child discuss the length measurements, you may want to use a tape measure to physically show just how long each creature is.
- This task may generate an interesting and valuable measurement discussion between you and your child.

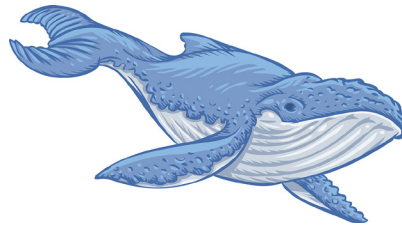
**He taura kōrero Māori**

Titiro ki tēnei tūtohi e whakaatu ana i ētahi o ngā inenga o ēnei aitanga e toru a Tangaroa.	Look at the table which shows some of the measurements for these three descendants of Tangaroa.
E hia manokaramu te taumaha whakawhānau o Aihe?	How many kilograms is the birth weight of Dolphin?
E hia te whakareatanga ake o te taumaha whakawhānau o Tohorā i tō Aihe?	How many times greater is the birth weight of Tohorā than that of Aihe?
He inenga tōtika, he inenga āwhiwhi rānei ēnei inenga? He aha koe i mōhio ai.	Are these measurements exact or approximate? How do you know?

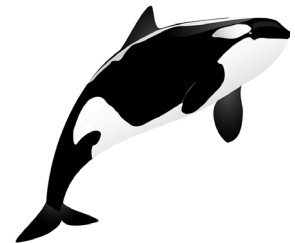




**Aihe**



**Tohorā**



**Kākahi**

taumaha whakawhānau	kei te takiwā o te 15kg	kei te takiwā o te	kei te takiwā o te
tāroaroa whakawhānau	1.2 m	7 m	2.6 m
taumaha kātua	kei te takiwā o te 300kg	kei te takiwā o te 150,000kg	kei te takiwā o te 2,500kg
tāroaroa kātua	2.5 m	25 m	7 m

- E hia te whakareatanga ake o te taumaha whakawhānau o Kākahi i tō Aihe?
- E hia te whakareatanga ake o te taumaha whakawhānau o Tohorā i tō Kākahi?
- E hia te whakareatanga ake o te tāroaroa whakawhānau o Tohorā i tō Kākahi, i tō Aihe anō hoki?
- Whakatairitea ngā taumaha me ngā tāroaroa kātua o ēnei aitanga-a-Tangaroa.

