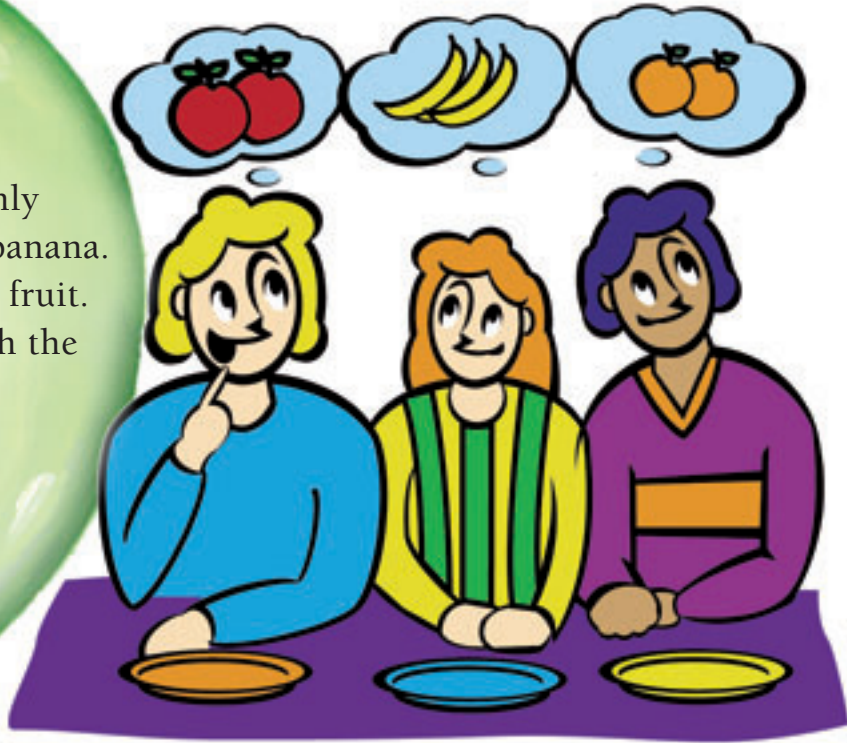


Pieces of Eight

Problem One

Barbara, Amy, and Pieta each like only one type of fruit – peach, apple, or banana. Each person likes a different type of fruit. No one likes the fruit that starts with the same letter as their name. Amy's favourite fruit has no stone. Which fruit does each person like?



Problem Two

Use all of the digits 3, 4, 7, and 9 once in each addition problem to make all three problems add up correctly.

$$\begin{array}{r}
 \square \square \\
 + \square \square \\
 \hline
 86
 \end{array}
 \quad
 \begin{array}{r}
 \square \square \\
 + \square \square \\
 \hline
 167
 \end{array}
 \quad
 \begin{array}{r}
 \square \square \\
 + \square \square \\
 \hline
 122
 \end{array}$$

Problem Three

An octahedron has eight triangular faces. How many corners and edges does it have?

