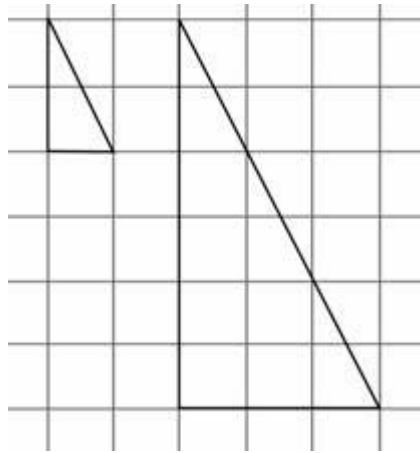


Te Ōwehenga me te Hautau

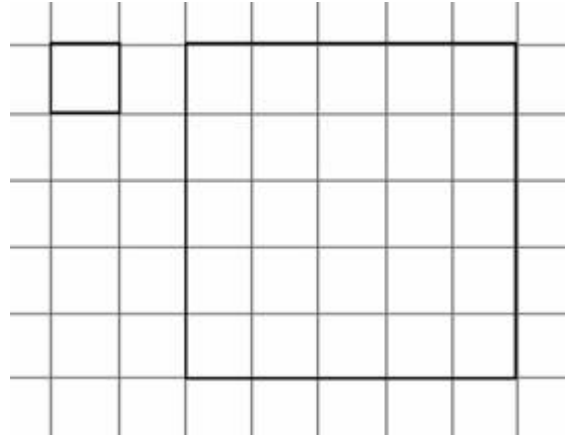
Whārangī Mahi 4

1. He aha te taurahi o ngā whakarāhinga nei?

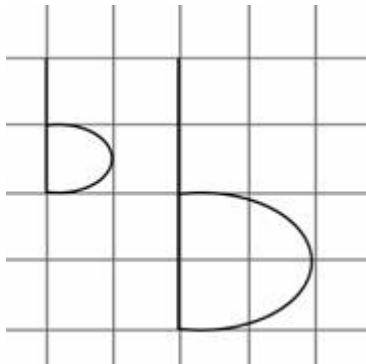
a)



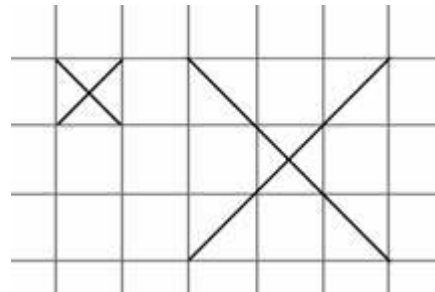
e)



h)

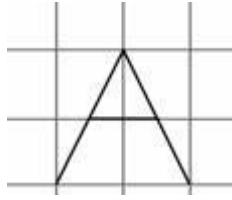


i)



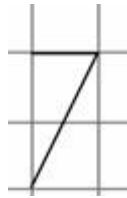
2. Tuhia ēnei āhua ki tō pukapuka, kātahi ka whakarahi mā te tau rahi e whakaaturia ana.

a)



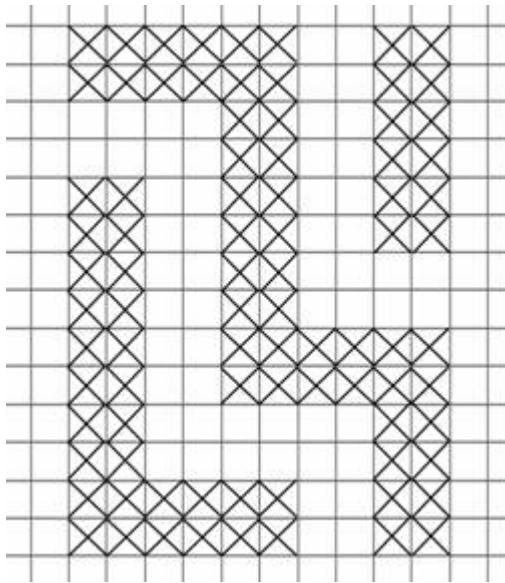
taurahi = 2

h)



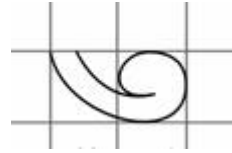
taurahi = 4

k)



taurahi = 2

e)



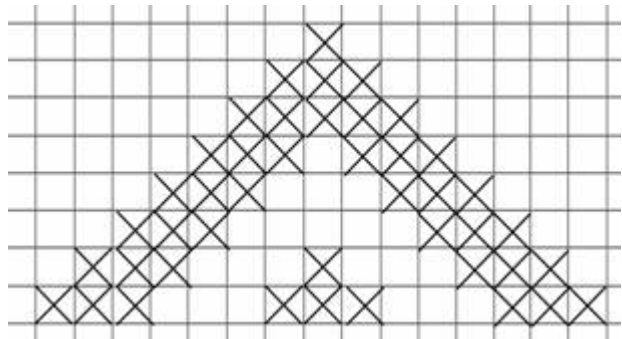
taurahi = 3

i)



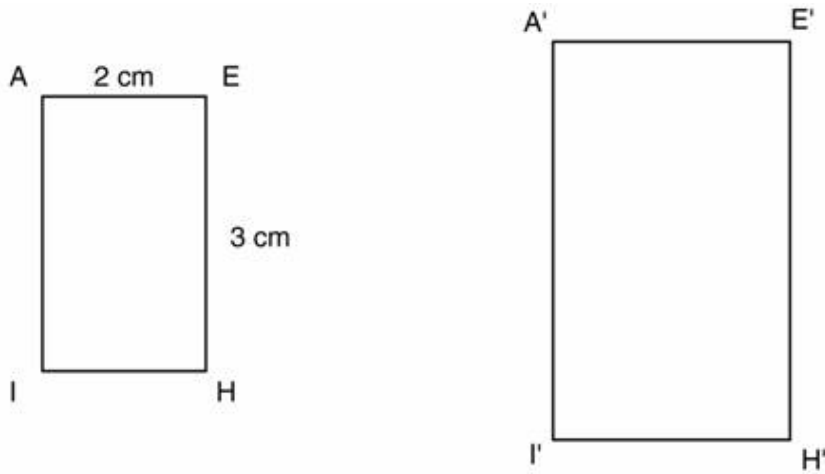
taurahi = 6

m)



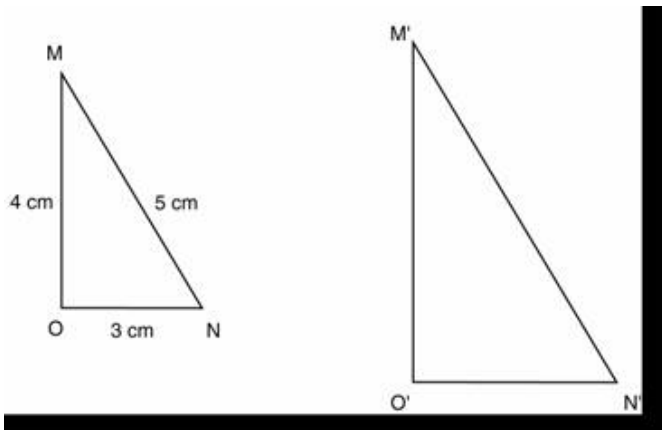
taurahi = 3

3. Titiro ki ngā āhua nei, he whakarahinga tētahi i tētahi.



- a) Mēnā ko te 2 te taurahi, e hia te roa o A'E' (kaua e whakamahi ruri)
- e) E hia te roa o E'H'?
- h) E hia te roa o H'I'?
- i) E hia te roa o I'A'?

4. Titiro ki ngā āhua (he whakarahinga tētahi i tētahi), ka whakaoti ai i te papatau.



taurahi	M'N'	N'O'	O'M'
2			
3			
5			
10			

5. E 0.5 mitarau te whānui, 1.5 mitarau te roa o tētahi tapawhā hāngai. Tāia te whakarahinga o tēnei tapawhā, mēnā ko te 4 te tau rahi.