

# Cuboid Construction

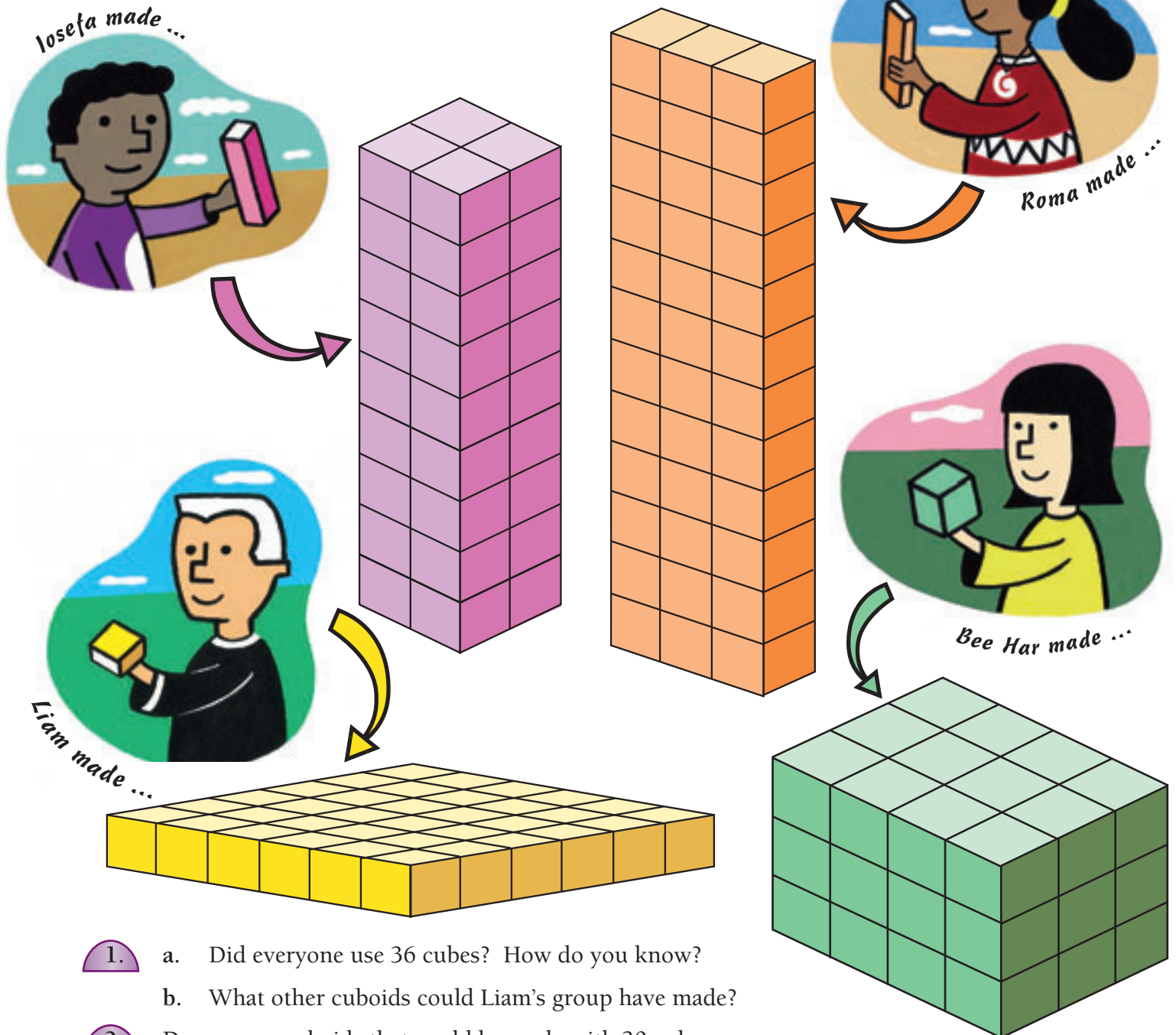
You need  multilink cubes

isometric dot paper

## Activity

Liam's teacher told his group to make a cuboid (rectangular prism) out of 36 multilink cubes.

His group investigated what cuboids they could make.



1. a. Did everyone use 36 cubes? How do you know?  
b. What other cuboids could Liam's group have made?
2. Draw some cuboids that could be made with 30 cubes.  
What is the volume of each cuboid you have drawn?