

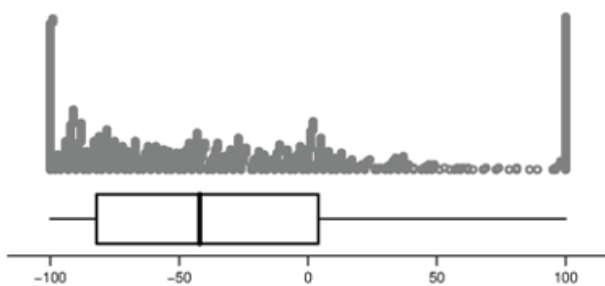
# How much bullying: Data from CensusAtSchool

**Data from CensusAtSchool:** 2015 questionnaire – Sample of 1000 students

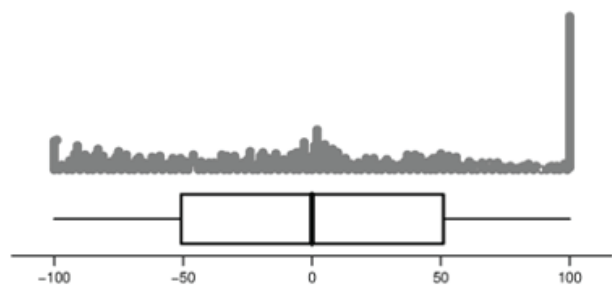
Bullying questions.

1. Is bullying among students a problem at your school? To show your answer, click on the slider box or move it to a new position. The further right you slide it, the more you agree with the statement.

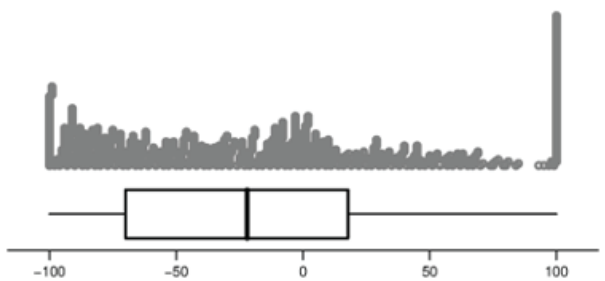
	Strongly disagree	Strongly agree
a. Physical bullying is a problem among students at our school	<input type="range"/>	
b. Verbal bullying is a problem among students at our school	<input type="range"/>	
c. Social/relational bullying is a problem among students at our school	<input type="range"/>	
d. Cyber bullying is a problem among students at our school	<input type="range"/>	



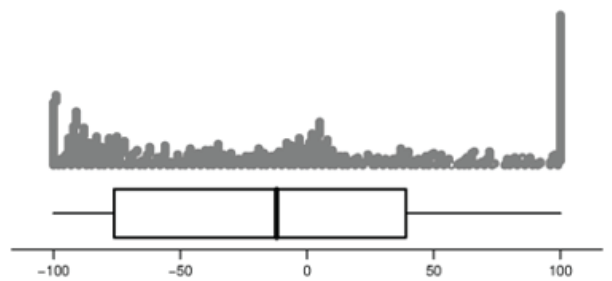
physical bullying



verbal bullying



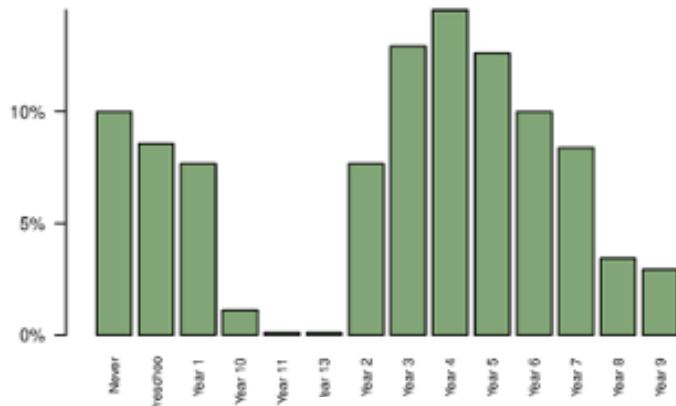
social bullying



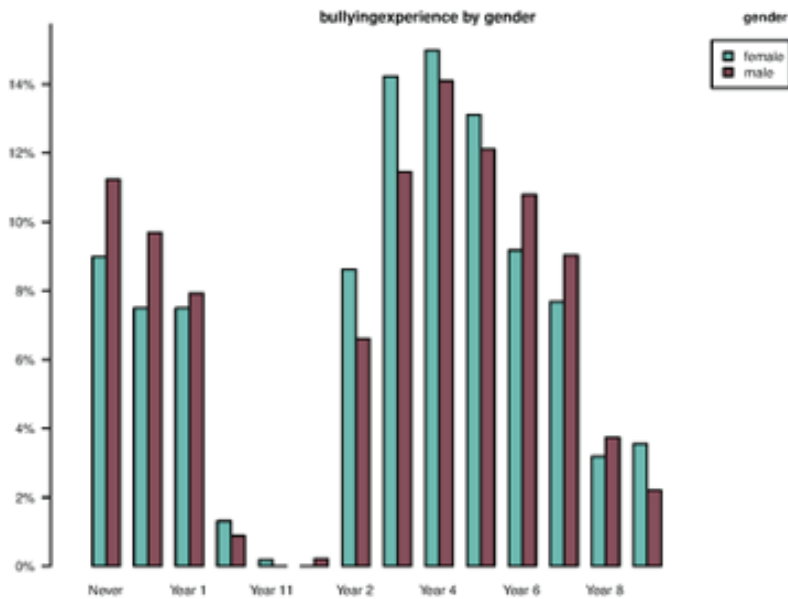
cyber bullying

# How much bullying?: Data from CensusAtSchool

2. When did you first personally experience or become aware of bullying behaviour?



	Never	Preschool	Year 1	Year 10	Year 11	Year 13	Year 2	Year 3	Year 4	Year 5	Year 6	Year 7	Year 8	Year 9	Total
<b>Counts</b>	99	85	76	11	1	1	76	128	144	125	99	83	34	29	991
<b>Percent</b>	10.0%	8.6%	7.7%	1.1%	0.1%	0.1%	7.7%	12.9%	14.5%	12.6%	10.0%	8.4%	3.4%	2.9%	100.0%



bullying experience

Table of counts: bullyingexperience by gender

	Never	Preschool	Year 1	Year 10	Year 11	Year 13	Year 2	Year 3	Year 4	Year 5	Year 6	Year 7	Year 8	Year 9	Row Total
<b>female</b>	48	40	40	7	1	0	46	76	80	70	49	41	17	19	534
<b>male</b>	51	44	36	4	0	1	30	52	64	55	49	41	17	10	454
<b>Column Total</b>	99	84	76	11	1	1	76	128	144	125	98	82	34	29	988

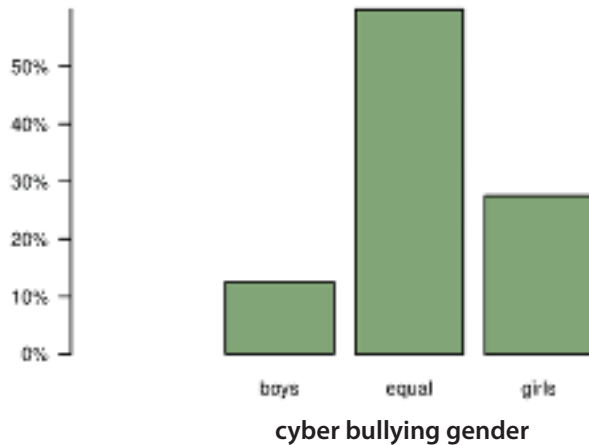
Frequency table: bullyingexperience by gender

	Never	Preschool	Year 1	Year 10	Year 11	Year 13	Year 2	Year 3	Year 4	Year 5	Year 6	Year 7	Year 8	Year 9	Total	Row n
<b>female</b>	9.0%	7.5%	7.5%	1.3%	0.2%	0.0%	8.6%	14.2%	15.0%	13.1%	9.2%	7.7%	3.2%	3.6%	100.0%	534
<b>male</b>	11.2%	9.7%	7.9%	0.9%	0.0%	0.2%	6.6%	11.5%	14.1%	12.1%	10.8%	9.0%	3.7%	2.2%	100.0%	454

## How much bullying?:Data from CensusAtSchool

3. Who do you think are cyberbullies?

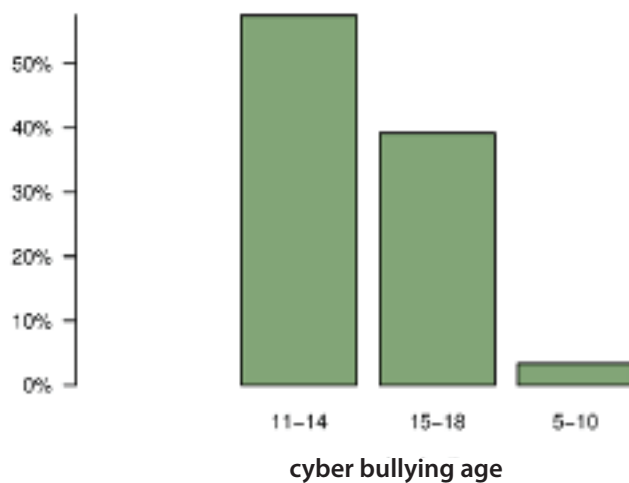
- mainly boys
- equal numbers of boys and girls
- mainly girls



	boys	equal	girls	Total
Counts	125	596	274	995
Percent	12.6%	59.9%	27.5%	100.0%

4. How old do you think cyberbullies are?

- mainly aged 5–10
- mainly aged 11–14
- mainly aged 15–18



	11-14	15-18	5-10	Total
Counts	572	390	33	995
Percent	57.5%	39.2%	3.3%	100.0%

# How much bullying?:Data from CensusAtSchool

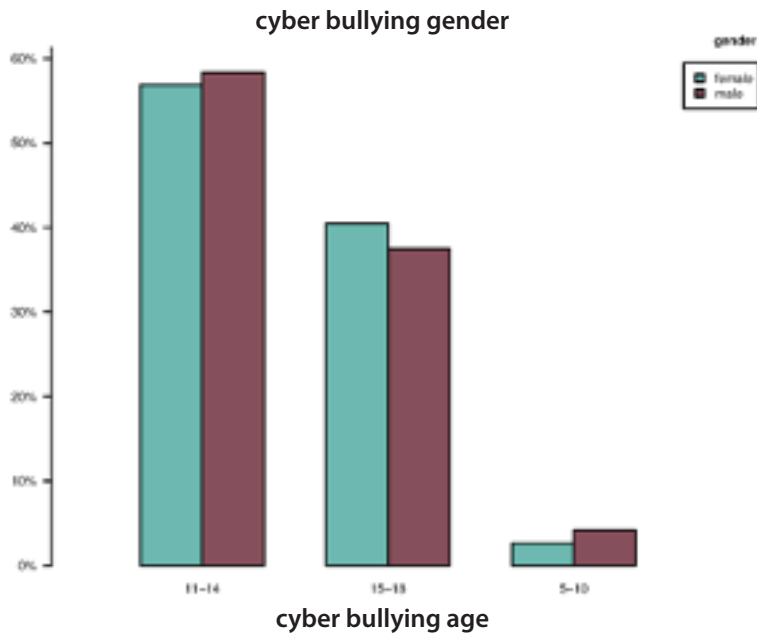


Table of counts: cyberbullyage by gender

	11-14	15-18	5-10	Row Total
female	305	217	14	536
male	266	171	19	456
Column Total	571	388	33	992

Frequency table: cyberbullyage by gender

	11-14	15-18	5-10	Total	Row n
female	56.9%	40.5%	2.6%	100.0%	536
male	58.3%	37.5%	4.2%	100.0%	456