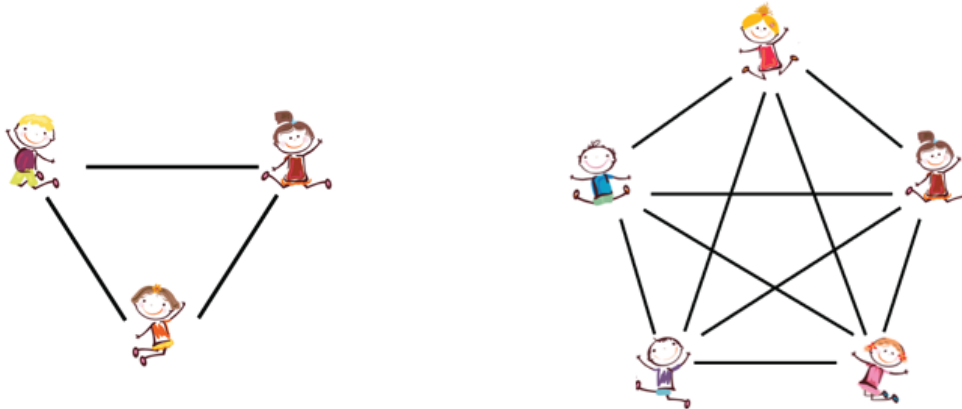
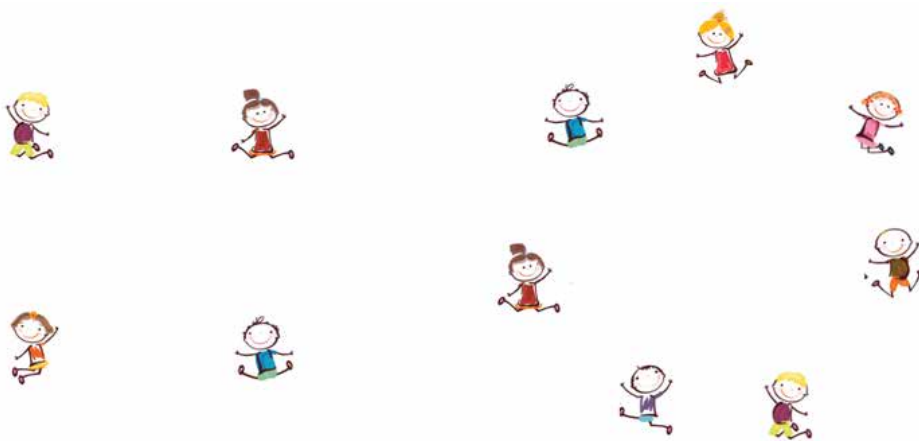


Whakatauki: Personal Connections

In the pictures you can see the number of two person connections that are made with three and five people.



You need more data. Find out the number of connections that are possible with four and seven people.



Use this table to organise your data.

Number of people	1	2	3	4	5	6	7	8
Number of connections								

1. Use your data to predict the number of connections for 1, 2, 6 and 8 people. Test your predictions.
2. Complete the table and record any patterns that you notice.
3. Find a rule to predict the number of connections for any number of people.